



LEASING & DEVELOPMENT GUIDELINES



Revised 31 May 2023

Table of Contents

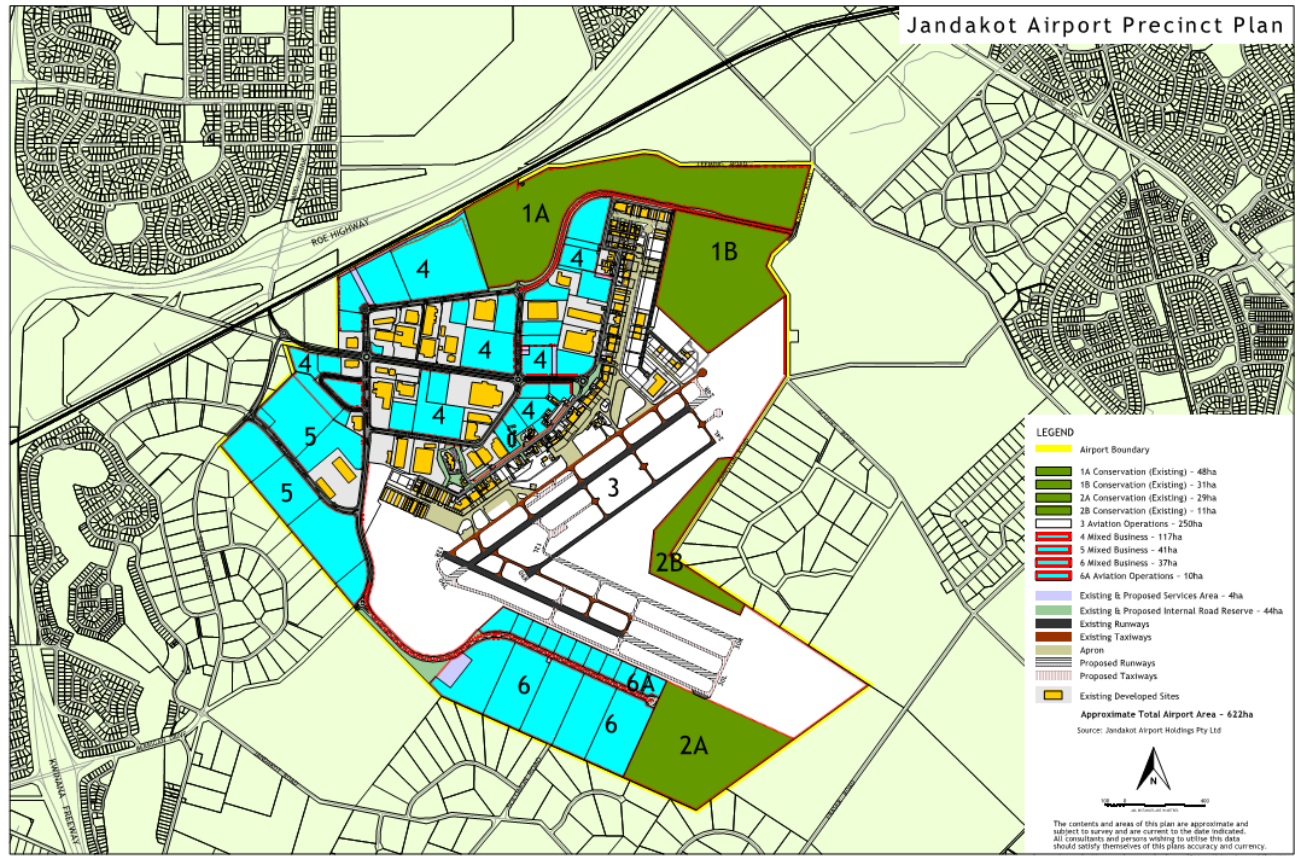
1. PURPOSE AND SCOPE	3
2. JANDAKOT AIRPORT MASTER PLAN	3
3. DEVELOPMENT OBJECTIVES	3
4. LAND USE	4
5. DEVELOPMENT AND APPROVAL PROCESS	5
6. BUILDING DESIGN CRITERIA	6
7. CONSTRUCTION MANAGEMENT	13
Appendix A – Development & Construction Approval Process	17
Appendix B - Construction Environment Management Plan	18
Appendix C - Contractor’s Insurance Details	20
Appendix D - Signage Guidelines	23
Appendix E – Lodgement of Development Applications	24
Appendix F – Applying for Permits or Authorisations	25
Appendix G - Power Connections	27
Appendix H – Water Connection	29
Appendix I – Telecommunications and Data	32
Appendix J – Embedded Generation (Solar PV) Connection	33

1. PURPOSE AND SCOPE

The Leasing and Development Guidelines have been written to align with the Jandakot Airport Final Master Plan 2020 to assist contractors and developers to understand the development requirements.

2. JANDAKOT AIRPORT MASTER PLAN

The development of Jandakot City is guided by the Jandakot Airport Master Plan 2020.



3. DEVELOPMENT OBJECTIVES

The following objectives guide the planning and development of the airport site:

- **Maintain** Jandakot Airport as a leading General Aviation facility through investment in infrastructure necessary to satisfy the forecast operational requirements;
- **Enhance** the airport's contribution to WA employment and economic growth through appropriate aviation and non-aviation development;
- **Encourage** sustainable development of the airport land through consideration and integration of environmental, financial and social values and stakeholder interests;
- **Ensure** the long-term viability and sustainability of the airport and its stakeholders through effective planning, development and management; and
- **Provide** a safe, secure, reliable and efficient airport operating environment.

4. LAND USE

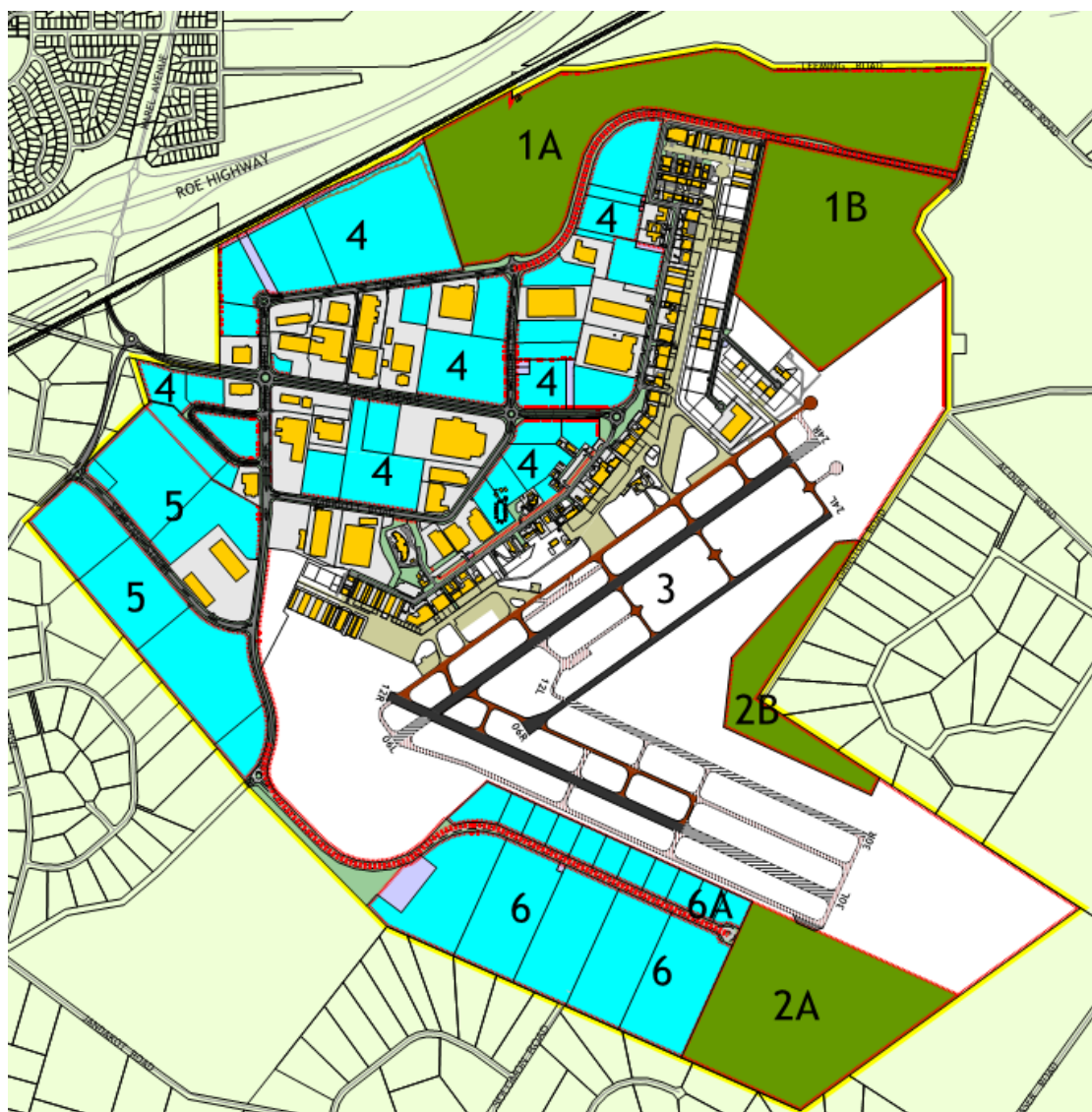
These Guidelines provide a framework for the whole of the Airport site.

The land use identified for each precinct is as follows:

Precinct 1 (A&B)	Conservation
Precinct 2 (A&B)	Conservation
Precinct 3	Aviation Operations
Precinct 4.	Mixed Business
Precinct 5	Mixed use business*
Precinct 6	Mixed Business*
Precinct 6A	Aviation Operations*

*Portions of these Precincts are within the Jandakot Underground Waste Pollution Control Area (JUWPCA). Development and operations within the JUWPCA will be managed to prevent impacts on groundwater quality.

Land Use



5. DEVELOPMENT AND APPROVAL PROCESS

Jandakot Airport is situated on Commonwealth Government land under a long term lease arrangement, to Jandakot Airport Holdings Pty Ltd (JAH). JAH has the responsibility to manage and operate Jandakot Airport and develop the surrounding land during their lease term.

5.1. Application and Approval Process

The Permit application process is generally a two step process. All major construction work at Jandakot Airport requires both:

Step 1: A **Development approval** from Jandakot Airport Holdings (JAH) *and also*

Step 2: A **Building or a Works approval** (depending upon the type of work involved) from the Airports Building Controller (ABC).

Major construction work includes but is not limited to the following:-

- Any new building or structure.
- Alterations and/or extensions to the internal space or external structure of a building.
- A change of land use.
- Constructing or altering earthworks (whether or not in relation to a building etc.)
- Constructing or altering engineering, electrical or hydraulic works;
- Demolishing , destroying, dismantling or removing: - Building, structure, earthworks, engineering works, electrical works and hydraulic works.
- Any Hardstand areas.
- Fencing to boundaries.

Landscaping. (Refer to JAH [landscape Design Guidelines.](#))

Structures include bridges, fences, towers, pylons and temporary structures such as tents. Some minor structures and works are not defined as ‘development’ and therefore do not require Development Approval, however they still require a Building or Works Approval from the Airport Building Controller (ABC) prior to any works being undertaken on Site.

Earth work or engineering works include runways, taxiways, aprons, roads, car parks, retaining walls, dams, railways pipelines, road surfaces, car park surfaces and tunnels.

The Development and Building Approval Process is detailed in the [Appendix A](#) flowchart.

STEP 1 - Development Application.

A Development Application, (available from the [JAH Website > Building Approvals](#)) must be lodged directly with JAH for:

- Any new development including a building or structure
- Alterations or additions to an existing facility
- A change in use of an existing facility

Development Applications must **always** be lodged **directly** with JAH and must include the information as detailed in [Appendix E](#). The ABC **does not require a copy of the Development Application**.

Development Application approval is binding and is based on the information provided to JAH. Any variation to the proposed building or works will require a new submission to JAH.

STEP 2 - Application for Building Permit, Works Permit or Demolition Authorisation.

The Department of Infrastructure and Regional Development (DIRD) represented by the ABC are the approving authority for the issue of Building Permits, Works Permits and Demolition Authorisation.

JAH and DIRD are essentially the “Local Government” authority for all development on Jandakot Airport land. Other local government approval is not required except for food and accommodation

facilities. This is to be arranged by the applicant and JAH will require a copy. For full details, refer [Appendix F](#).

6. BUILDING DESIGN CRITERIA

JAH is committed to environmental sustainability and as such will require Developers (or their appointed contractors) to demonstrate their commitment to the design and implementation of sustainable building technology, including minimisation of building waste, recycling, energy and water efficiencies and improved environmental outcomes.

As a minimum, design criteria for all buildings are to conform to the energy efficiency requirements of the Building Code of Australia.

6.1. Environmentally Sustainable Design

The consideration of sound environmental design parameters can significantly reduce every day running costs of buildings without significant additional building costs.

Building envelopes and internal layouts should be designed to minimise energy consumed for heating, cooling and light where:

- Window design and shading facilitates good thermal and daytime performance.
- Building materials and insulation minimise the thermal transfer.
- Building materials and energy sources are selected to minimise energy requirements and greenhouse gas emissions.

Building services shall be designed to minimise energy and resource use through:

- Maximising the use of natural light and ventilation.
- Selection of energy efficient lighting control systems, fittings and appliances.
- Design for the use and management of natural ventilation.
- Utilise energy efficient mechanical ventilation and air-conditioning equipment and controls.
- Minimise water use via water efficient fixtures and fittings and maximise water re-use and recycling where possible.
- Minimise waste through product and material choice and recycling and re-use of materials if possible.
- Mitigation of wind shear effect (if applicable).

6.2. Architectural Character

The following principles will form part of the assessment of any new development.

- Contribution to streetscape.
- Buildings should be sited to take advantage of views, provide a positive presentation to road and to provide a strong corporate image and an inviting entrance.
- The main entrance to the building is to be clearly visible or close to the front of the building.
- Generally, architectural form and character should avoid large unrelieved expanses of wall.
- Where more than one building is planned for a site, the design should result in the creation of a group of integrated buildings clearly expressing their inter-relationship.
- Massing and building form should be of a contemporary nature, based on simple bold and strong forms using the selection of various materials, texture and colour to highlight the design, develop the corporate image within the overall design vision of the precinct.

6.3. Materials, Colours and Finishes

The use of texture and colour should reflect adjoining and existing developments. In general, neutral shades of grey's, creams and earth colours are encouraged for the major areas of walling with features expressed in panels of strong, bold corporate colours with integrated signage.

Roof cladding shall be non-reflective. Zincolume or similar finishes will not be approved.

All mechanical/electrical plant and equipment shall be hidden from view from public areas including public roads. Any screening should be designed as an integral part of the building form and character

Any plant required to be roof mounted will require special screening or design treatments. The presentation of the roof is an important part of the total design.

6.4. Car Parking Requirements and Vehicular Movements

- The design of car parking and vehicular manoeuvring areas should address:
- The separation of car parking from truck manoeuvring and service areas.
- Safe pedestrian access.
- Limited and practical crossover placement.
- Disabled parking and access shall comply with AS 1428:2002 and the BCA.
- Car park design and function shall conform to Australian Standards for Parking Facilities (AS 2890.2 and AS 2890.3).

As a guide, the number of car bays should comply with the following table:

Automotive and Marine Sales Premises	1 space for every employee plus 1 space for every 100 m ² of display area.
Bank / offices	1 space for every 20 m ² NLA.
Child Day Care Centre	1 space for every employee plus a paved put down and pick up area to the satisfaction of JAH.
Consulting Rooms	4 spaces for every practitioner.
Industry / Workshops	1 space for every 50m ² of open space used for industrial purposes, plus 1 space for every 50m ² of GFA; or 1 space for each employee, whichever is the greater.
Office	1 space for every 20m ² of NLA or 1 space for every employee, whichever is the greater.
Shop	6 spaces for every 100m ² of NLA plus 1 space for every employee.
Showroom	1 space for every 100m ² of GFA plus 1 space for every employee.
Warehouse	1 space for every 100m ² of GFA
Any Other Use	To be determined by JAH.

6.5. Storm Water Catchment, Control and Drainage

Water sensitive urban design strategies are to be applied to storm water management.

The use of drainage swales and recharge basins can be incorporated in the on-site landscape areas. Rainwater tanks for storage and re-use on site are encouraged.

No polluted or contaminated storm water may be discharged into the soakwell system. Where necessary, pollution control equipment such as oil and grit traps and gross pollution traps shall be installed to applicable BCA standards, certified and properly serviced and maintained as part of the environmental management of the site. Collection and disposals of all pollutants produced within any site will be the responsibility of the lessee.

Generally, Stormwater design should allow for the following:-

- Retention of a 10 year ARI storm event without ponding on the site.
- Ensure that 100 year ARI storm events are retained on site.

- The developed areas to be designed to cater internally for storm events of the major 1:100yr/24hr ARI storm event.
- Where possible, design of the runoff from the building roofs to be captured and stored for re-use within the facility.
- Provide for 300mm freeboard from building floor levels to the 100 year ARI storm event.

6.5.1. Additional Guidelines for Development Areas within Groundwater Pollution Control Zone

The lots within the Priority 1 Source Protection Area of the Jandakot Groundwater Mound (JUWPCA), require additional guidelines for the treatment and disposal of stormwater from the site. These sites cannot dispose of runoff directly into the ground via infiltration due to the risk of pollution of the groundwater within the Priority 1 Source Protection Area.

As stated within Jandakot Airport Master Plan 2020, Supplementary Services Report the recommended revised stormwater disposal guidelines for these development areas/lots are:

- Where possible, the runoff from building roofs is to be trapped and stored for re-use within the facility. Clean roof runoff not re-used within the facility shall be infiltrated on site without any discharge onto the impervious hardstand areas.
- Impervious hardstand areas shall be graded to capture the runoff for piping into the precinct piped drainage network connection.
- Internal piped drainage network shall be designed to cater for a 10 year ARI storm event as defined in Australian Rainfall and Runoff.
- The internal hardstand areas shall be designed to provide overland flow paths to the precinct road network for storm events greater than 10 year ARI and up to 100yr ARI.
- The stormwater connection management conditions will require the development areas to treat stormwater runoff from their site to remove total suspended solids (TSS) and hydrocarbons. It is anticipated that the development areas will provide treatment via propriety oil and sediment separators (such as the Humes Humeceptor). The stormwater runoff treatment used for the development site must be designed to achieve;
 - Treatment of 80% minimum of the average annual runoff volume
 - Removal and retention of 80% of total suspended solids
 - Reduction in hydrocarbons by 80%
- Design calculations or manufacturer certification must be provided for any oil and sediment separator (such as the Humeceptor) or other proposed stormwater treatment measure to demonstrate that the proposed treatment levels are achievable.
- JAH approval is required of the drainage flow calculations for each development prior to connection to the precinct road drainage system, with the lot connection criteria;
 - Maximum connection flows based on 120 L/sec/Ha of site
 - Major storms compensated within the lot
- All water quality devices shall be inspected and cleaned out as per manufacturers, and site condition requirements. Records of all maintenance

and monitoring/test results are to be maintained and presented to JAH should an event occur that warrants maintenance record inspection.

- Prior to connection to the precinct road stormwater drainage system, JAH is to inspect the constructed stormwater drainage system and provide confirmation that it conforms to the approved design.
- The design of the adjacent precinct road piped drainage network, abutting these development lots, shall cater for following catchment areas of the development lots:

6.5.1.1. Large Internal Lots (Non-Aviation Use)

Impervious Hardstand Areas; Assume 70% of the total development lot (with 0.9 impervious factor).

Roof Areas; Assume 25% of the total development lot (stormwater re-used on site)

Landscaping Area; Assume 5% of the total development lot (stormwater retained on site)

The runoff from the landscaping and roof runoff areas are to be retained onsite, whilst the impervious hardstand area is to be discharged into the precinct road network as per the connection conditions described above.

6.5.1.2. Small Aviation Use Lots

Impervious Hardstand Areas; Assume 45% of the total development lot (with 0.9 impervious factor).

Roof Areas; Assume 50% of the total development lot (stormwater re-used on site)

Landscaping Area; Assume 5% of the total development lot (stormwater retained on site)

The runoff from the landscaping and roof runoff areas are to be retained onsite, whilst the impervious hardstand area is to be discharged into the precinct road network as per the connection conditions described above.

Summary (Storm Water Catchment, Control and Drainage)

The development lots within the JUWPCA have connections into the precinct road drainage, with the peak discharge capacities from the lots to be governed at 120 L/sec/ha of effective catchment area, with the impervious catchment area based on 50% of the overall lease area. This essentially equates to 60l/sec/Ha of the overall lease area.

These discharge conditions will typically require internal lot compensated stored in the order of 150 to 200 m3 per effective hardstand areas or 75 to 100 m3 per overall lease area.

The precinct basin capacities have been designed to cater for 50% of the lease area to discharge into the basin network (via compensated peak flows).

The water quality initiatives are also a key component within the developments to ensure that only clean stormwater is discharged into the precinct basins.

This design criteria is similar to all the JAH development lots within the JUWPCA.

6.6. Signage and External Display

The JAH signage policy requires a consistent approach be undertaken for all street, tenant and directional signage.

JAH's overall objective is to meet the signage needs of all tenants while maximizing and standardizing the design aesthetics of the precinct. Refer [Appendix D](#).

6.7. Fencing

Fencing is to be constructed in accordance with JAH requirements and as a guide should consist of the following:

- Post and rail chain wire (black PVC coated) security fence minimum 1.8m high with three rows of barbed wire to side and airside boundaries. Support poles and standards to be matt black finish.
- All vehicle access gates must be electronically controlled using swipe card system or similar and match the adjacent fence.
- Fencing to road frontages to be 1800mm high "I Bolt" W Profile Palisade fencing with "Dulux Metropolis Storm Pearl Satin" powder coat finish.

6.8. Street, Carpark and Apron Lighting

All JAH and Lessee Street and carpark lighting shall be constructed in accordance with JAH requirements, and comply with [CASA MOS Part 139](#).

As a general guide, lighting shall generally comply with the following (or equal approved) :

- **Poles:** - Jandakot Park decorative single or double outreach column (as may be required). Poles to be powder coated Dulux matt black /Night Sky (Ref. No 19319 Matt) with anti-graffiti clear coat over.
- **Luminaires:** - Light fittings to meet specifications of the WE-EF PFL 500 LED series.

6.9. Roof Safety System

A roof safety system shall be installed in accordance with the following:

- National Construction Code/Building Code
- AS/NZS 1891 Series Industrial Fall Arrest Systems and Devices
- AS/NZS 1657 Fixed Platforms, Walkways, Stairways and Ladders – Design, Construction & Installation
- [Prevention of Falls at Workplaces Code of Practice](#).

Once installed, copies of compliance certificates shall be submitted to JAH.

6.10. Site Services

Any services connections, permanent and temporary, shall be metered. Before meters are either installed or de-commissioned, contractors must provide notice to the JAH Facilities Manager.

The services outlined on the following pages are the standard level provided by JAH to each site. JAH may however be able to provide for higher requirements on request provided enough prior notice is given. Developers (or their appointed contractors) are requested to outline any special services requirements at the earliest stage in the development process to allow for any additional requirements.

6.11. Power Connection

For information regarding power connection requirements, review [Appendix G](#).

6.12. Embedded Generation (Solar PV) Connection

At present, embedded generation including Solar PV cannot be connected to the JAH electrical network. For more information regarding the connection of embedded generation (Solar PV) at Jandakot Airport, [review Appendix J](#).

6.13. Water Connection

For information regarding power connection requirements, review [Appendix H](#).

6.14. Fire Protection Requirements

All developments shall comply with the Building Code of Australia and [Appendix H](#).

6.15. Gas

Natural gas may be available within the Jandakot City precinct at the boundary of each site. Installations are subject to relevant standards and requirements. Certification of the installation must be supplied to ABC and JAH by the gas fitter prior to use. Developers (or their appointed contractors) will be required to make separate application to the relevant authority for a metered gas connection at their lease boundary.

JAH may apply charges for the provision of water, sewer, gas and power services, depending on development requirements and site conditions.

6.16. Telecommunications and Data

For information regarding telecommunication requirements, refer to [Appendix I](#).

6.17. Sewer

JAH (the approving authority) will allow one point of connection for sewer drainage at the site boundary.

Trade Waste

Before any construction commences however, infrastructure to discharge industrial/trade waste to the reticulated sewer also requires a 'Permit to Construct' from the Water Corporation. This ensures that what is proposed to be built, is compliant with Water Corporation's requirements.

Once construction is complete, but before use of the facility, the Lessee or occupying tenant will need to liaise with Water Corp and apply for a Trade Waste Permit to discharge Trade Waste into the JAH Sewer system.

6.18. Roads

Roads are designed to accommodate vehicle types and sizes that are appropriate to the land uses approved under the Airport Master Plan.

Developers (or their appointed contractors) are responsible for the construction of concrete crossovers at their cost.

6.19. Landscaping

Landscaping must be in accordance with the Jandakot Airport [Landscape Design Guidelines](#).

Generally, roadside verges within the Jandakot City precinct will nominally be 6.0 m wide (from the road edge/kerb to the site boundary). These verges shall be landscaped, reticulated and maintained by the Lessee or by the Property Manager appointed by JAH (as part of Lessee's outgoings).

On new developments, Developers (or their appointed contractors) shall allow for the supply and installation of a minimum of two 100mm dia pvc ducts under each crossover and also along the length of the verge to allow for future services by others (e.g. retic). Contractors are required to

notify the JAH Infrastructure Manager before crossover construction commences to allow JAH to decommission any existing live services.

6.20. Landscape Strip and Building Setbacks (roadside boundaries)

A continuous 6.0 m wide landscaped setback from the roadside boundary must be provided and maintained along the road frontage. This landscape setback shall incorporate trees, shrubs and/or lawn planting in accordance with the Jandakot Airport [Landscape Design Guidelines](#).

6.21. Sea Containers and Transportables

Sea Container: a shipping or similarly designed transportable container used for the purpose of transporting goods and/or storage.

Transportable Building: a portable building, demountable, donga or any other non-permanent structure brought to site for the purpose of storage, occupation and/or operations.

All sea containers and transportable buildings (including temporary use) are to comply with the [Sea Container and Transportable Building Policy \(PO301\)](#).

6.22. Building Generated Windshear

Buildings at airports can generate windshear that could pose a safety risk to aircraft. The proponent should first check with JAH whether a windshear assessment would need to be done on the proposed development site. If an assessment is deemed necessary, then all costs associated with the assessment will be for the developer.

6.23. Exhaust Plume Emissions

Should any proposed development include plant or equipment that may generate exhaust plumes, proponents are advised that the emission must be less than 4.3m/s. If higher emissions are required, approval must first be sought from the Operations Manager.

7. CONSTRUCTION MANAGEMENT

JAH considers it essential that a healthy and safe workplace be provided for all staff, contractors and visitors.

7.1. Contractor

All contractors are required to comply with all applicable OSH Legislation including Acts, Regulations and Codes of Practice.

Contractors are obliged to ensure the following:

- all applicable licences are current.
- all plant is regularly maintained and guarded.
- insurances are current and adequate.
- compliance with WA OSH Legislation at all times .
- management of OSH systems.
- complete Risk Assessments and implement Safe Work Method Statements.
- co-operate with JAH in matters of OSH risk control.

JAH may perform site inspections / audits to confirm compliance. JAH may perform site inspections / audits to confirm compliance. If in the opinion of JAH, any employee of, or a person responsible to the Contractor contravenes the above, the Contractor may be directed to remove the person/s from the site. Any reasonable directions issued by JAH must be complied with.

7.2. Inductions

All contractors must complete the JAH online contractor induction. For information go to Safety on the JAH Website or contact the OSH & Compliance Coordinator on ohs@jandakotairport.com.au

7.3. Insurances

Both JAH and the Commonwealth of Australia to be noted as an insured under the policy. The policy is to cover the period of works and any subsequent maintenance periods stipulated in the relevant contracts.

7.4. Contractor Compound

Contractor vehicles are to be parked in a location to be approved by JAH.

The Contractor is to notify JAH of the number and type of vehicles used in connection with the works and ascertain if any restrictions will apply.

7.5. Excavation

No excavation is to commence without the approval of the JAH and the relevant approval from the ABC. All excavation is to be performed in accordance with the [Excavation Code of Practice 2005](#).

The Contractor must contact the Infrastructure Manager prior to any excavation works being carried out for the construction of crossovers in any road verge at JAH. Upon completion of the crossover works, the Contractor must inspect the works with JAH, to check and ensure that damaged landscaping has been rectified and that there are no leaks in the landscaping irrigation reticulation in the vicinity of the crossover.

Dial before you dig for non JAH assets is compulsory on all sites.

7.6. Traffic Management

When working on the road or within the road reserve, contractors must have adequate traffic management systems in place.

Traffic management is to be performed by trained personnel and is to be compliant with the Traffic Management for Works on Roads Code of Practice.

7.7. Communications Equipment

The contractor must ensure that any two-way radio system or other forms of communication on the site, does not cause interference with airport or airline communications and equipment.

7.8. Electrical Safety

All electrical work must be performed by a licensed electrician as defined in the Electricity Act 1945 and Electricity (Licensing) Regulations 1991. Electrical services will be installed in accordance with AS 3000 Electrical Installations (also known as the “Wiring Rules”).

Vicinity access permits and electrical access permits are to be arranged by the Contractor.

JAH and the ABC are to be given a copy of preliminary and completion notices.

All portable electrical equipment is to be tested and tagged in accordance with AS 3012:2003 Electrical Installations – Construction and Demolition Sites.

7.9. Housekeeping

Loose items (Foreign Object Debris) can get sucked into aircraft engines or propellers and cause serious incidents.

All areas including pavements that are affected as a consequence of carrying out the works, are to be kept clean at all times by the Contractor.

At the completion of the project the work area must be left clean and tidy and the area restored to the satisfaction of JAH.

7.10. Utilities and Structures

Where the contractor requires connections or disconnections to JAH’s water, sewer or storm water drainage services or any other utility on the site, permission from JAH must be obtained prior to work commencing and all necessary approvals must be obtained from JAH and the owner of the utility.

The location of any known services and structures shown on any JAH drawings is approximate and it is the responsibility of the Contractor to verify exact locations.

Dial before you dig must be contacted prior to works for location of “other” services.

Where any service or structure is damaged, the Contractor is to immediately notify JAH and shall be responsible for the full cost of any repairs.

7.11. Alcohol and Other Drugs

In the interest of providing a safe workplace, JAH shall have the right to request a Contractor to remove any personnel from site if it is considered that they are suffering from the effect of alcohol or other drugs.

7.12. Height Restrictions, External Lighting, Emissions to Air

Under the Airport Act 1996: Airports (Protection Of Airspace) Regulations any activity that infringes protected airspace is called a “CONTROLLED ACTIVITY”, and requires approval before it can be carried out.

Controlled activities include:

- Permanent structures (e.g. buildings, masts, antenna).
- Temporary structures (e.g. cranes, scaffolding).
- Any activity that causes intrusions into protected airspace (e.g. glare from artificial light or reflected sunlight, air turbulence, smoke, dust or steam).
- External lighting in the vicinity of the airport.

Carrying out a controlled activity without approval is an offence under section 183 of the AIRPORTS ACT with a fine up to 250 penalty points (currently up to \$27,500).

JAH has details of allowable heights and 60 days is required for assessment for controlled activity. Copies of the [Crane Use / Controlled Activity Application](#) form are available in the Airspace Protection section of the [JAH Website](#).

7.13. Construction Signage

Any construction signage requires JAH approval before it is installed.

7.14. Temporary Buildings

No temporary buildings will be allowed on site except with the approval of the Airports Building Controller.

7.15. Contractor Work Plan

The Contractor's work must not have an adverse effect on landside or airside activities or on any users of the Airport. This condition includes the requirement to maintain clear vehicular and pedestrian access to all areas of the airport and to ensure the safety of airport users. The Contractor's staging plan and detailed construction program is to make adequate provision to comply with this condition.

A copy of the Contractor's staging plan and detailed construction program is to be given to JAH prior to commencing work on site.

7.16. Site Security

Sites must remain secure at all times. Gates must remain closed and locked when the site is not active. Contractors and tenants must ensure that airside security is maintained at all times. For public protection, fencing or hoarding may be required where the works are in close proximity to occupied areas or buildings.

Discuss any security matters with the Infrastructure Manager on 0477 900 096.

7.17. Environmental Requirements

All construction/civil works (including demolition) with the potential for environmental impacts require a Construction Environment Management Plan (CEMP), which must be reviewed and endorsed by the JAH Environmental Management team prior to works commencing. Where practicable, the CEMP should be submitted to JAH as a component of the building/works permit application. Refer [Appendix B](#) for CEMP guidelines. Additional information can be found in the document "Environmental Management Plans: Policy and Guidelines".

Where minor, short-term works are assessed as posing low or negligible environmental risk, the CEMP requirement may be waived by JAH.

Prior to a lessee occupying and commencing operations a tenant Operational Environmental Management Plan (OEMP) is required unless the lessee is assessed as having a 'Low' environmental risk profile and JAH have issued an OEMP exemption.

7.18. Hazardous Substances

Where any hazardous substances are to be used by the Contractor suitable information such as material safety data sheets must be provided at the work site. All hazardous substances are to be managed in accordance with the [National code of Practice for the Control of Workplace Hazardous Substances \[NOHSC:2007 \(1994\)\]](#)

Planning for adequate safeguards including, but not limited to, personal protective equipment must be completed prior to the works being undertaken. The Contractor must inform JAH of hazardous substances prior to them being used and these must be documented in the CEMP.

NOTE: Due to the restricted airside access on precinct 6 airside developments, Developers and Lessees should take note that all waste oil shall be collected from landside, not airside. As such, if Developers/Lessees require waste oil to be collected and removed from site, they will need to store it in a place where it can be collected via access from landside (and not airside).

7.19. On Completion of Construction – As Constructed documentation

“As constructed documentation” including all plans, specifications, Operations and Maintenance Manuals, all plumbing, mechanical and electrical certificates must be issued to JAH.

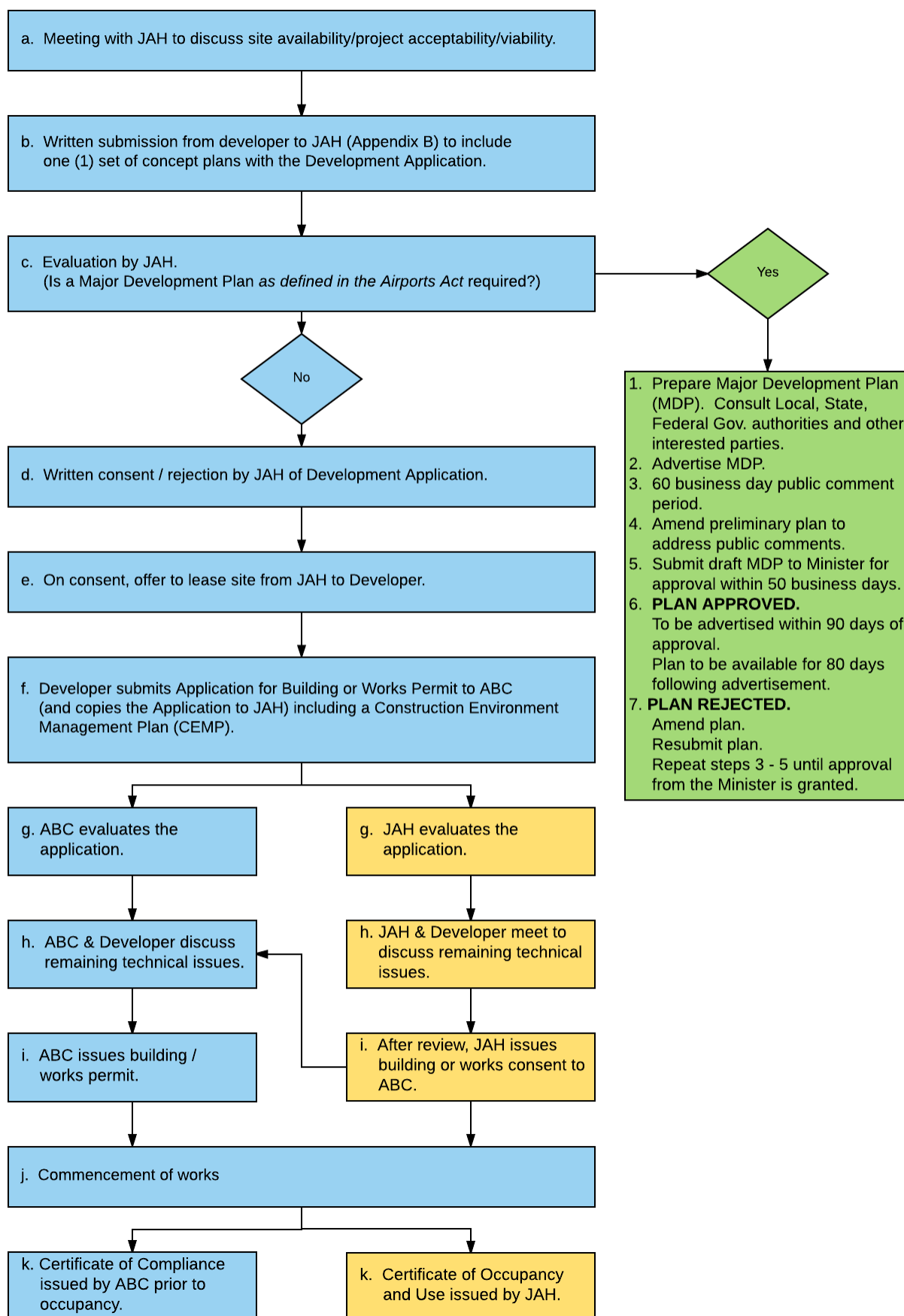
“as constructed” plans, manuals and specifications should be issued in the following formats: -

- One hard paper copy of all drawings, manuals and specifications and
- One electronic AutoCAD “.dwg” copy of all drawings on a data disk and
- One electronic “.PDF” copy of all drawings and specifications on a data disk

When underground services are installed, they must be surveyed by a licensed surveyor, to determine the position and depth of the service. An as constructed plan must be prepared and sent to JAH. Trenches must remain open until such time as JAH is in possession of these drawings. JAH will then give approval to cover the services.

On completion of the works, an “as constructed” survey signed by a qualified surveyor must be provided to JAH.

Appendix A – Development & Construction Approval Process



Appendix B - Construction Environment Management Plan

Developers (or their appointed contractors) must inform JAH what they want to develop, what they expect their environmental impacts to be and how they plan to minimise or negate the impacts.

Construction Environment Management Plans (CEMPs) are required by JAH to provide for management of construction projects so that the environment is protected.

It is the Developer's responsibility to manage the environmental aspects of their project.

Requirements of a CEMP

Whilst CEMPs are prepared and developed by the Contractor, they must meet JAH guidelines to ensure that they are complementary and integrated with the overarching JAH Environmental Management System. As such, all CEMPs must be reviewed and endorsed by JAH prior to being implemented. The scope and content of a CEMP be determined by the scope of the project and the significance of a project's potential environmental impacts.

CEMP Template

A CEMP template has been developed by JAH to assist Developer in the preparation of a CEMP. The template includes the minimum project information required to assess a project at Jandakot Airport, including the most commonly encountered environmental risks and controls on standard construction projects. Additional information may be required in order to capture all potential environmental risks associated with a project before the CEMP is approved by JAH.

CEMP Templates can only be obtained by contacting the JAH Environment Manager on 9417 0900.

Pro Forma CEMPs

Developers (or their appointed contractors) may wish to use their own preferred style of documentation instead of the JAH CEMP Template. Developers should still seek guidance from the JAH CEMP template and the Jandakot Airport Environmental Management Plans Policy and Guidelines to ensure that the content meets the minimum expectations of JAH. Compliance with each of the items in the below table will assist in ensuring that the CEMP contains the necessary components. The Jandakot Airport [Environmental Management Plans Policy and Guidelines](#) provide greater detail on how to prepare a CEMP that will meet the minimum expectations of JAH.

Construction Environmental Management Plans	
Components of a CEMP	*Potential Environmental Impacts
Background	<ul style="list-style-type: none"> • Waste (general and recycling) • Hazardous waste • Storage of fuels, oils and chemicals • Refuelling • Air quality and dust management • Noise and vibration • Storm water, surface water and groundwater • Vegetation clearing • Landscaping • Dieback management • Weed control • Flora and fauna • Indigenous heritage • Acid Sulphate Soils • Contamination • Roads and public transport
Introduction	
Project location, description and site specific conditions, including a detailed Site Plan	
Commitment to compliance with JAH EMS, policies and procedures	
CEMP objectives	
Company's Environment Policy (or commitment to comply with JAH's Environmental Policy)	
Environmental Management	
Environmental management structure and responsibilities (corporate and on site)	
Approvals, permits and licensing requirements	
Environmental induction and training of staff/contractors	
Emergency Contacts and Response	
Implementation	
Site specific risk assessment	
Environmental risks and controls *(refer to right column)	
Reporting and Communication	
Environmental incident reporting – internally and to JAH	
Post Construction reporting to JAH	
Communication Processes (with staff, contractors neighbours, JAH, etc.)	
Monitoring and Review	
Environmental monitoring (checklists, inspections, audits etc.) and commitment to allow JAH and DIRD inspections	
Environmental auditing	
CEMP review	
Environmental schedules (e.g. incident report form, inspection checklists, induction register etc.)	

Appendix C - Contractor's Insurance Details

Name of Contractor

Address

Principle Function / Service

Details of Cover

1. Workers Compensation

[By Law The Contractor shall:

Obtain insurance, or pay levies or similar charges, as required by any legislation relating to compensation for injured workers; and

where such legislation does not provide indemnity against claims for common law damages by workers, insure against such common law liability in relation to all persons employed by the Builder in or about the execution of the Works; and

ensure that every sub-contractor engaged by the Head Contractor complies, in relation to the employees of such sub-contractor, with the obligations set out in paragraphs and

Insurance effected by the Head Contractor pursuant to this Clause, which shall be extended to include the interests and liabilities (if any) of the Principal.]

Name of InsuredPolicy Number

Expiry Date/...../.....

Principle's Endorsement YES / NO

Premium Paid YES / NO

Signed by InsurerDate/...../.....Stamp.....

Certificate of Insurance

Currency Submitted YES / NO Date of Certificate/...../.....

2. Public Liability Insurance

[The contractor shall in the joint names of the Principal, the Contractor, and all his sub-contractors, effect insurance which at all times covers liability to the public for an amount not less than \$10 million in respect of personal injury to or death of any person whomsoever and in respect of any injury, loss or damage whatsoever to any property real or personal including property (other than the Works) belonging to the Principal or in which he is interested and where the injury, death, loss or damage arises out of or is caused by the execution of the Works.

The policy may exclude personal injury to or death of a person who at the time is defined as a worker of the Insured under any legislation in relation to workers' compensation insurance of the State or Territory in which the Works are situated where such claims are made directly by the worker of the Insured or any dependant of such worker.]

Name of InsuredPolicy Number

Expiry Date/...../..... Limit of Indemnity

Business Description

Page 1 of 3

Endorsement

(Jandakot Airport Holdings Pty Ltd and Commonwealth of Australia noted as principle / joint insured)

Premium Paid YES / NO

Signed by InsurerDate/...../.....Stamp.....

Certificate of Insurance
Currency Submitted YES / NO Date of Certificate/...../.....

3. Contract Works Insurance

[Generally, before the Contractor commences work under the Contract, the Contractor shall effect an insurance policy covering:

- (a) the care of the whole of the work under the Contract from and including the date of commencement of the work under the Contract to Date of Practical Completion, and
- (b) the care of outstanding work and items to be removed from the Site by the Contractor after the Date of Practical Completion until completion of outstanding work or compliance with the Contractor's obligations.

The insurance policy shall be in the joint names of the Principal, The Commonwealth of Australia and the Contractor, and shall cover the Principal, the Commonwealth of Australia, Contractor and all Consultants, and all subcontractors employed from time to time in relation to the work under the Contract for their respective rights, interests and liabilities and, shall be effected with an insurer and approved in writing by the Principal The policy shall be maintained until the Contractor ceases to be responsible for the care of anything. A minimum cover of \$10,000,000 in the joint names of the Principal and the Head Contractor from Award Date to Completion of the works is required].

Name of InsuredPolicy Number

Expiry Date/...../..... Limit of Indemnity

Business Description

Endorsement

Jandakot Airport Holdings Pty Ltd and Commonwealth of Australia noted as principle / joint insured.

Premium Paid YES / NO

Signed by InsurerDate/...../.....Stamp.....

Certificate of
Currency Submitted YES / NO Date of Certificate/...../.....

4. Personal Accident & Sickness

Name of InsuredPolicy Number

Expiry Date/...../..... Weekly Date/...../.....

Weekly BenefitCapital Benefit

Premium Paid YES / NO

Signed by InsurerDate/...../..... Stamp.....

Certificate of
Currency Submitted YES / NO Date of Certificate/...../.....

5. Professional Indemnity Insurance (If applicable)

[Before the Contractor commences work under the Contract, the Contractor shall effect a professional indemnity insurance (PI) policy with a total aggregate cover of not less than \$10,000,000. The policy and such level of cover shall be maintained until the Final Completion Certificate is issued.

The Contractor shall further ensure that each and every Consultant, engaged by him, is insured for professional indemnity. The Contractor's PI Policy and Each Consultant's PI policy shall be maintained until the Final Certificate is issued and thereafter for a runoff period of the Commonwealth Statute of Limitations.

[The insurance Policy shall be in the joint names of the Principal, The Commonwealth of Australia and the Contractor]

Name of InsuredPolicy Number

Period Of Insurance From/...../..... To/...../.....

Limit of Indemnity

Jurisdictional Limit Excess

Premium Paid YES / NO

Signed by InsurerDate/...../..... Stamp.....

Certificate of
Currency Submitted YES / NO Date of Certificate/...../.....

Appendix D - Signage Guidelines

Signage should be designed to enhance the visual appeal of the built environment. It should be integrated with the design of buildings and a consistent approach is therefore required for all street, tenant and directional signage.

All signage requires approval, refer [section 6.8](#) for signage application.

Road verge/street signage

- A street number totem shall be erected by the Developer in accordance with Jandakot City guidelines and specifications. Logos, slogans or promotional messages may not be displayed on these signs.
- Only street numbers be allowed on street signage.
- Tenant names or additional directions will not be permitted on street signage.

Building Signage

- On-building signage may contain the business name and/or corporate logo.
- No building sign shall be larger than 10% of the total area of the wall onto which it is placed.
- Signs must be specified, installed and maintained to a high standard.
- All external building signage shall comprise three dimensional raised lettering and logo (laser cut or similar, minimum of 20 mm depth).
- Building signage facing primary roads shall be illuminated to enhance the presentation of the precinct and it must be compliant with [CASA MOS Part 139](#).
- Sub-tenants shall not place a sign on the building but may place their business name on or adjacent to the main entrance door to their premises.
- No advertising or promotional signs shall be placed on buildings.

Construction Site signage

Sites will require certain signage for the efficient and safe operation of their business. All such signage shall comply with the following:

- All signage is to be installed and maintained to a high standard.
- The only signs to be used in car parks or internal roadways are those for vehicle/pedestrian directions and OH&S standards.
- Site signage visibility from street frontage is to be minimised.
- No temporary signage is to be erected.
- No promotional signage is to be erected.

Appendix E – Lodgement of Development Applications

Further to [Section 5](#) step 1, development applications must always be lodged directly with JAH and must include the following:

- Completed JAH Development Application form and fee, refer [Appendix B](#).
- A general description of the proposed development including operations to be conducted at the proposed facility
- Overall site plan, including AHD levels (to Perth Coastal Grid coordinates), the location of adjoining buildings, landscaping areas, provision for parking and access, (minimum scale 1:500).
- Detailed floor plans and coloured elevations (all sides) showing window locations, doors etc, (minimum scale 1:200). All plans must be submitted both in hard copy and in an electronic (pdf) format.
- A schedule of external finishes including proposed materials, colours and features.
- The approximate value of the proposed development
- Details of any tenant specific fit-out items such as fire tanks, refrigeration units etc.
- An indicative landscaping plan outlining the landscaping concept, types and size of plants and trees, existing landscaping or features, lawn areas etc, (minimum scale 1:200) Note: A fully detailed landscaping plan (in hard copy and electronic format) is required with the application for building permit.
- Details outlining any special requirements or conditions that may need to be addressed such as additional power, trade or noxious waste.
- Details of vehicular traffic that will be required to access the site.
- Floor areas must be shown for each use on a detailed sketch plan; i.e. 2500 sq. m warehouse space, 300 sq. m office space etc.
- An environmental statement detailing what activity will be undertaken on the site with comment on measures to be incorporated in the design and operation of the facility to achieve sustainable development and to address any regulatory requirements connected with the site's permitted use.
- Details of any food type, operations where the business either provides food to staff or is involved in preparation and distribution of food.

Fees payable to JAH when lodging a Development Application are:

TYPE OF ACTIVITY	JAH DA Fees based on estimated cost of works (incl. GST)
Hangar, office, training school or alterations and additions in excess of \$100,000.	\$500 up to value of \$500,000 plus \$300 for every additional \$500,000 thereafter.
Minor building alterations and extensions, additional services or utilities up to a value of \$100,000.	\$250 per application

Appendix F – Applying for Permits or Authorisations

Further to [Section 5](#) Step 2, the following is required when applying for a building permit, works permit or demolition authorisation.

An Application for a Building Permit, Works Permit or Demolition Authorisation can only be lodged once a Development Application (if required) has approval from JAH. **All permit applications must be submitted to the Airport Building controller through Jandakot Airport**

A Building Permit, Works Permit, or Demolition Authorisation must be obtained from the Airport Building Controller (ABC) **before any** building works can commence on site (whether or not the works involve minor structures or minor works, which do not require Development Approval).

The Department of Infrastructure & Regional Development (DIRD), represented by the Airports Building Controller (ABC) considers and issues all building permits, works permits or demolition authorisations. The ABC assesses the application for conformance to the Building Code of Australia and other statutory requirements.

Concurrently, Jandakot Airport assesses each application to satisfy itself that the proposed building activity is consistent with the Jandakot Airport Master Plan and or Environment Strategy. The ABC further seeks JAH's comment and incorporates any conditions required by JAH in the Building or Works Permit Approval or the Demolition Authorisation. The approval process involves obtaining the consent of the Airport Lessee Company (ALC) which is Jandakot Airport Holdings Pty Ltd.

JAH Work/Building Permit application forms are available from Jandakot Airport Website [HERE](#)

All buildings and site improvements are to be designed in accordance with the current Building Code of Australia (BCA).

The Regulations describe the things Jandakot Airport must be satisfied about before it gives its consent, such as whether the proposed building activity is consistent with the Jandakot Airport Master Plan and or Environment Strategy.

NB: Building and Works Permit Applications (including fee payments) are to be lodged with the Airport Building Controller (ABC), **through Jandakot airport Holdings** using the applicable JAH [Building / Works Permit application form](#) together with the following information:

- Detailed construction documentation including plans and specifications (in hard and electronic copy format).
- Details of all materials, colours and finishes.
- A Construction Environmental Management Plan (CEMP) to cover the works period. (Refer Appendix B for guidelines on this requirement).
- Detail showing intended building, signage and carpark lighting compliant with [Civil Aviation Safety Authority Manual of Standards \(MOS\) 139](#), Chapter 9, Section 9.21.

When lodging a permit application through JAH, an electronic copy of the application must be submitted. In addition, (if requested), one hard copy of the permit application (including drawings) must also be lodged with JAH. A [Jandakot Works / Building Application Form](#) must also be completed and appended to the original permit application documentation being lodged with JAH

Building plans may also be required to be submitted to the Department of Fire and Emergency Services (DFES) of Western Australia for comment.

A Building Permit approval issued by the ABC is binding and will remain valid for three years from the date issued by the ABC. Any variation to that approval will require a new submission to the ABC and JAH.

Within 1 month of reaching Practical Completion of a building, Developers (or their appointed contractors) must provide JAH with a set of “as constructed” (to scale) plans and specifications in the following formats:-

- one hard/paper copy.
- one electronic AutoCAD “.dwg” copy of all drawings on a data disk.
- and one electronic “.PDF” copy of all drawings and specifications on a data disk.

Developers (or their appointed contractors) are to note that failure to submit the “as constructed” plans, specifications and Operations and Maintenance Manuals in a timely manner may result in JAH delaying the issue of the Certificate of Occupancy and Use.

Fees and Payment Options

Fees payable to DIRD for Building/ Works Permits are outlined in the [Airport Building Controllers Fees](#).

Remittance advice notes for fees paid to the Department of Infrastructure should be sent to JAH who in turn, will update The ABCO records.

Fees payable to JAH when making an application for a Building or Works Permit are as follows:

TYPE OF ACTIVITY	PERMIT TYPE	JAH FEES (Incl. GST)
Commercial, Retail, Showroom, Warehouse, hangar, training school and the like.	Building Permit	\$ 500 for works valued between \$10,000 and \$100,000 \$ 750 for works valued between \$100,000 and \$300,000 \$1,000 for works valued between \$300,000 and \$500,000 \$2,000 for works over \$500,000 in value
Building alterations or extensions.	Building Permit	\$ 500 for works valued between \$10,000 and \$100,000 \$ 750 for works valued between \$100,000 and \$300,000 \$1,000 for works valued between \$300,000 and \$500,000 \$2,000 for works over \$500,000 in value
External works, services or utilities	Works Permit	\$ 500 for works valued between \$10,000 and \$100,000 \$ 750 for works valued between \$100,000 and \$300,000 \$1,000 for works valued between \$300,000 and \$500,000 \$2,000 for works over \$500,000 in value
Minor Works	Works Permit	250 for works valued up to \$10,000.00
Signage	Signage	\$250 per application for works up to a value of \$20,000

Electronic Fund Transfer (EFT) fee payments

When submitting a Development Application to Jandakot Airport Holdings (JAH), or when lodging an application for a Building or Works Permit to the ABC, fee payments to JAH can be made either by cheque or by Electronic Fund Transfer (EFT).

It is important to note, that if an EFT fee payment is made to JAH, a site or JAH Development Reference Number must be provided with the payment detail. A Development Reference Number will be provided by JAH, upon request, when making EFT payments. JAH EFT payment details are as follows:-

Bank: Commonwealth Bank of Australia

Account name: Jandakot Airport Holdings Pty Ltd.

BSB No: 066-000

Acct No: 13321793

Please quote a Site number, a JAH Development Reference number, or details of the fee payment when making an EFT.

Appendix G - Power Connections

Further to [Section 6.11](#), each site is provided with low voltage (415 volt 3 phase) power allocated as 200 Kva per hectare of site area to the front boundary. Power requirements in excess of this are to be agreed with JAH and may attract headworks charges.

Both permanent and temporary electrical connections shall be metered. When electrical meters are either installed or de-commissioned, contractors are to advise JAH Infrastructure Manager of the meter number and meter readings using a JAH Site Meter Detail Record Sheet.

Private metering:

On new developments, Developers (or their appointed contractors) are to allow for the installation of a private metering system supplied by Energy-Tec.

The private metering system shall have the following facilities:

- Meters used for private metering shall be EDM I Genius MK6 / Mk6N. These meters, shall be purchased from Energy-Tec Holdings Pty Td programmed with Energy-Tec Standard Consumption Meter Program and equipped with necessary GSM communications equipment.
- All meters shall store up to 12 channels of load survey data at 15 minute or 30 minute intervals for a minimum of 300 days internally.
- All whole current (direct connect 10/100 Amp) meters shall be protected by 100 amp up-stream protection device/s either with sealable 100 amp fusible links or lockable circuit breakers. Generally meter panels shall be wired so as to allow isolation of each meter individually rather than having to isolate an entire board to replace or program a single meter. The easiest way to achieve this without additional cost is to place the tenancy breaker before the meter rather than after the meter.
- Each tenancy meter/logger shall be programmed to display on the LCD panel the tenancy number alongside of the current energy, cold water, hot water, gas and chilled water reading.

Whole Current (10/100 Amp Direct Connect) Meters

- Whole Current (10/100 Amp, direct connect) meters shall be EDM I 'Genius' MK6/MK6N meters or approved equivalent and shall be class 1S to IEC 61036 and shall be direct connecting 3x100 amp single phase and/or 1x100 amp 3 phases 4 wire for tenancies with three phase sub-mains.
- The meters shall have six (6) additional pulse inputs rated at 12 volts and shall be complete with a 4-wire RS485 communications port and a 12volt power supply for powering the pulse inputs.

CT Meters

Photographic evidence of CT Ring ratings must be supplied to JAH upon installation. (Note all CT type meters should have test block facilities).

Check Meters for incoming mains supply

In addition, all check meters for the main incoming supplies will be installed on the main switchboard/s. These meters will be EDM I Mk6E Class 0.2S CT meters complete with Class 0.5S Metering grade extended range Current Transformers These meters will be NEMMCO type tested, 3 phase 4 wire kilowatt hour meters with monitoring of Wh, varh, VAh, Watt, Var, VA, Maximum Demand Current, True RMS Voltage and Current, Power Factor, Frequency, Phase angles, sag/swell capture, quality of supply features, waveform capture and THD measurement. The meters shall have an 8kV isolated 4-wire RS485 communications port, an isolated optical port (IEC 1107) and shall interface to the private metering system.

No additional Multi-Function meters shall be required on the mains supply as these meters will perform this task. In addition, the meter/s shall keep 300 days of ½ hour load-profile data.

Clarifications

- The Contractor, or his Electrical Contractor is to source the electrical meters from Energy-Tec
- Installation of the meter shall be undertaken by the Contractor's Electrical Contractor.
- CT's and ancillary equipment shall be supplied and installed by the Contractor's Electrical Contractor or their switchboard manufacturer.
- Energy-Tec is to commission each panel and connect to the data acquisition service.
- Once the supply is live, the Contractor, or his Electrical Sub-Contractor must supply a JAH Meter Detail Record Sheet (FO905)

Meter Supplier contact details

Energy-Tec Holdings PTY LTD

www.energy-tec.com.au

Phone – 08 9309 0000

Fax – 08 9309 0099

Email – service@energy-tec.com.au

Developers (or their appointed contractors) are to note that JAH is the service provider / Authority for the supply of mains power at Jandakot Airport.

The Contractor shall provide JAH with a completed *Site Meter Detail Record Sheet* when commissioning both temporary builders, or permanent pulse metered electrical connections.

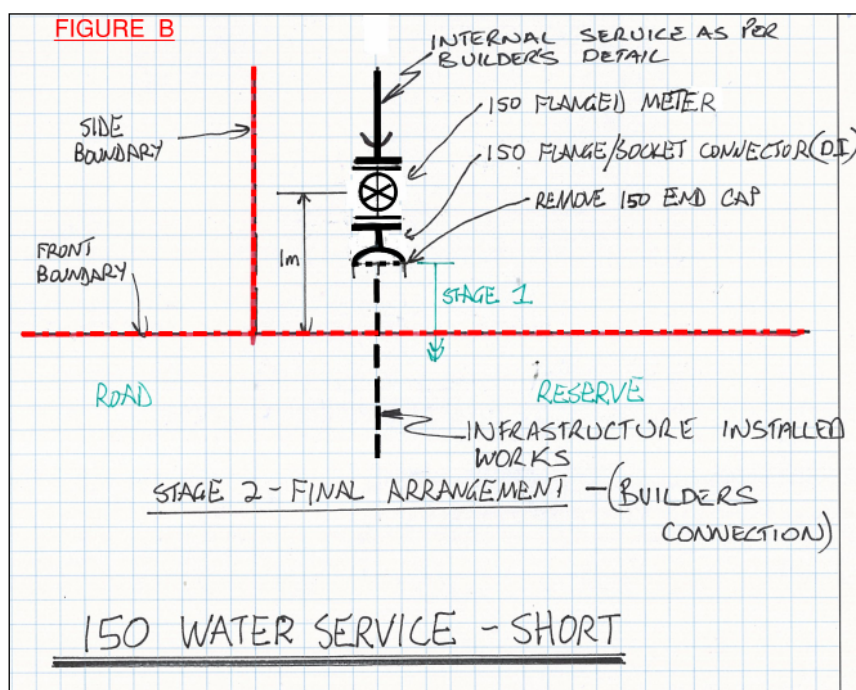
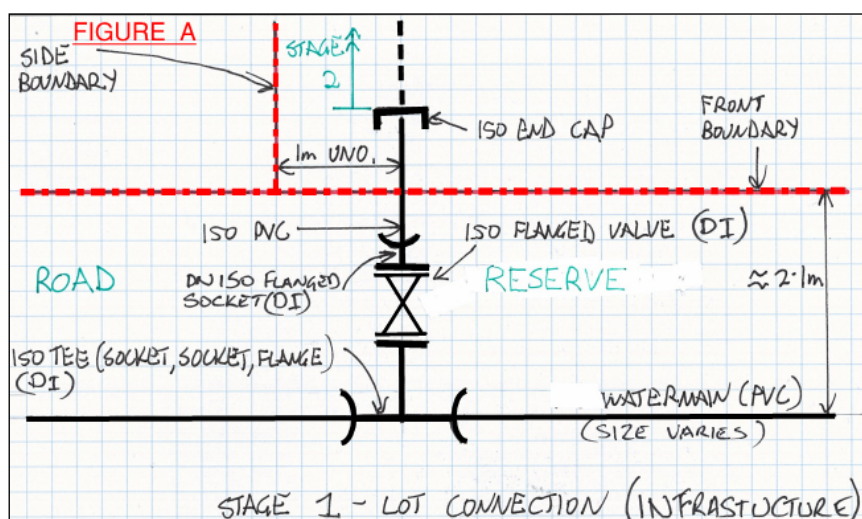
Appendix H – Water Connection

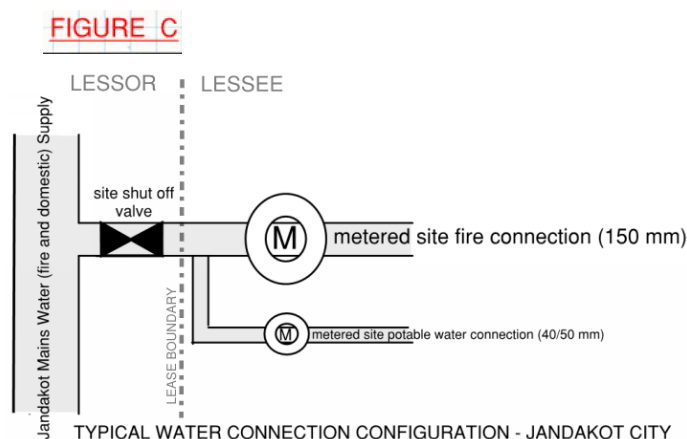
Further to [Section 6.13](#), below contains details regarding the water connection requirements at Jandakot Airport.

As there is no independent fire water service at Jandakot Airport, JAH will allow one point of connection (main located at the Lot boundary) for both domestic and fire requirements. Each Jandakot City site will be allowed a maximum 150 mm dia. water connection for both combined domestic and fire water services.

Developers (or their appointed contractors) are referred to the following sketches which typically show i) the Stage 1 Lot connection (Infrastructure) which JAH shall provide at each site boundary (*Figure A below*) and ii) the Stage 2 final pipe and fitting arrangement (Builder's Connection) Developers (or their appointed Contractors) are expected to provide (*Figure B below*).

Developers (or their appointed contractors) will need to connect their domestic potable (25, 40 or 50mm) water line on the lessor's side of the metered 150mm common water connection. (*Figure C below*, is indicative of the separate metering arrangement for both fire and domestic connections.





Fire Fighting Performance Requirements

The JAH 'town' mains system (street fire hydrants) has been designed to provide and maintain a performance using the Deemed to Satisfy (DTS) provisions of the Building Code BCA Part E1.3 and performance requirements defined under Australian Standard 2419.1, as a guide.

The reticulated street mains system has been hydraulically engineered to provide and maintain a flow of 20 litres per second (Lt/s) with a minimum residual (flowing) pressure of 200 kPa from any part of the JAH reticulated system. Water requirements in excess of that provided are to be agreed with JAH and may attract additional headworks charges

Where a building requires multiple hydraulic system requirements (e.g., fire sprinkler systems, Wall-Wetting Drenchers etc) a higher supply performance is necessary and provisions must be made for the introduction of on-site firefighting storage tank systems, Electric and Diesel fire pumpsets, in line with design provisions defined under current contemporary design standards. Clarification of Manufacturer of Proposed Pump sets to be supplied to JAH with the building permit application.

Developers (or their appointed contractors) are to note that Jandakot Airport Holdings is the service provider / Authority for the supply domestic and fire mains water at Jandakot City.

Water meters

Both domestic (temporary and permanent) and permanent fire water shall be independently metered. Developers (or their appointed contractors) are responsible for the supply and installation of all water meters, which shall be a type approved by Water Corporation (Elster or similar approved). When temporary and/or permanent water meters are either installed or de-commissioned, contractors are to advise JAH Infrastructure Manager of the meter number and meter readings using the JAH Site Meter Detail Record Sheet.

Figure C above, shows the typical final metering arrangement for fire and domestic water connections.

The electrical contractor shall be responsible for the connection of all water meters to the AMR (Automatic Meter Reading) system (if available). The contractor shall be responsible for the installation of conduits and cabling between water meters and their respective electricity meter. Cabling shall be performed in stranded CAT5e or CAT6 cable.

Wherever possible water & weatherproof Scotch Loc™ devices shall be used between the pulse cables and the CAT5 cabling. It is permissible, where two water meters are sited adjacent to each other, to use a single cable from the water meters to the respective electricity meter or logger. Generally, the following conductor pairs shall be used:

SERVICE	CAT5 conductor pairs
COLD WATER	Blue & blue/white
HOT WATER	Orange & orange/white
CHILLED WATER	Green & green/white

The hydraulic contractor shall be responsible for ensuring that any water meter supplied has pulsed output capability, and is supplied with the proprietary reed switch for connection to the AMR network.

Once the supply is live the Contractor must supply a JAH Meter Detail Record Sheet (FO905).

Backflow Prevention devices (BPD)

Commercial and industrial facilities within Jandakot Airport may be required to install backflow prevention devices internal to the property. Developers (or their appointed Contractors) are therefore responsible for providing zone and individual backflow prevention protection from hazards within the property as specified in AS/NZ 3500.1. Plumbing and Drainage – Water Services.

Licensed plumbing contractors have obligations under the plumbing regulations to install the zone and individual backflow prevention protection devices where they are necessary. The plumbing regulations are administered by the Plumbers Licensing Board.

Backflow prevention devices are required to be compliant with Australian Standard AS2845.

The Metropolitan Water Supply, Sewerage and Drainage By-laws 1981 also require testable backflow prevention devices to be regularly tested and maintained in accordance with Australian Standard 2845.3.

The cost of installing any backflow prevention device shall be borne by the Developer (or his appointed Contractor).

Appendix I – Telecommunications and Data

Further to [Section 6.16](#), below contains requirements for telecommunications and data at Jandakot Airport.

On new developments, developers (or their appointed contractors) shall be responsible for an AFR (Application for Reticulation) through Telstra's Smart Community website (<https://www.telstra.com.au/smart-community>) including the lodgement of their site plans showing the lead in duct to the site boundary.

Telstra Lead-in duct and cable

1. The Contractor shall log an AFR (Application for Reticulation) with Telstra Smart Community as soon as the electrical plans are available.
2. The Contractor shall familiarise himself with Telstra's General Specifications and requirements.
3. Lead-Ins
 - a) The AFR is generally a notification to Telstra that a new development will require a communication service and that either:-
 - (i) Telstra must supply and install a lead in duct and cable to an open trench (to be provided by the Contractor) at a future "trench open date" (date provided by the Contractor), **or**
 - (ii) The Contractor will be supplying and installing a lead-in duct and cable from the boundary pit to the MDF, **or**
 - (iii) The Contractor will only install the lead in duct and Telstra will be required to install the lead in cable. (Note:- Telstra require a minimum of 12 weeks' notice if they are notified by the Contractor to install the lead in)
4. Jandakot City Contractors shall as a minimum comply with item 3a)(ii) above, whereby they shall supply and install the lead in duct (minimum 100mm), cable (minimum 10 pair copper) and pit (all to Telstra standards) from the site boundary to the building entry point and MDF and further log an AFR to Telstra as noted under Item 1 above.
5. If the Lessee's communication requirements are not known 12 weeks prior to the Contractor achieving Practical Completion, then (as a minimum) the Contractor shall install a 10 pair copper lead-in cable from the boundary pit to the MDF. This work must be undertaken by a Telstra certified contractor.
6. The Lessee is to apply for their own communication services at the earliest opportunity after the contractor has completed his site work.

The Contractor should be aware that Telstra will **not** visit the site unless the lead in duct and cable has been installed. It is the Contractor's responsibility to engage with Telstra's Smart Community.

Although a network of telecommunication pits, pipes and ducts presently service the Jandakot City precinct, lessees will still be required to make their own applications to their preferred service providers, for both copper or fibre data service connections.

Appendix J – Embedded Generation (Solar PV) Connection

Further to [Section 6.12](#), below contains details regarding the embedded generation connection requirements at Jandakot Airport.

At present, embedded generation including Solar PV cannot be connected to the JAH electrical network. Refer to the following Memorandum prepared by an independent consultant on the Limitations of the connection of Embedded Generation (Solar PV) at Jandakot Airport.



Memo

Project No: 43559

To: Jandakot Airport Holdings

Date: 2 October 2019

Subject: Limitations of the Connection of Embedded Generation (Solar PV)

The Jandakot Airport Precinct is connected to Western Power's network as a high voltage customer. Even though tenant installed Solar PV systems are connected at low voltage, Western Power views the embedded generation capacity for the Jandakot Airport site as an aggregated system connected to their network at high voltage.

In order to protect Western Power's network stability the total inverter capacity for any embedded generation (solar PV) connection is limited to 30 kVA. Jandakot has some existing solar PV installed on site which has exhausted this allowance. Western Power do allow for the connection of embedded generation (solar PV) in excess of 30kVA, however additional requirements as defined by section 3.6 of Western Power's Technical Rules (WPTR) are needed.

The WPTR requires a higher level of protection functionality to maintain power system stability. This is in addition to the power system protection already required at the intake substation (point of grid connection). The additional protection requirements are detailed in section 3.6.10 of the WPTR, for small embedded generators (solar PV) up to 10MW.

The existing high voltage switchgear at the point of connection for the Jandakot Airport site does not have the additional protection requirements as defined by the WPTR for embedded generation (solar PV) in excess of 30 kVA. Therefore, the equipment at the intake substation is required to be upgraded if additional embedded generators (solar PV) are installed in the Jandakot Airport Precinct.

As such, JAH is not currently permitted by Western Power to connect additional Solar PV embedded generation solutions within its site limits.